

LEARNING FOR HOPE & AGENCY IN AN AI WORLD

Artificial Intelligence carries a range of ethical issues that should be understood and considered in education.

B BIAS & DISCRIMINATION

AI is a mirror of our world, reinforcing bias:

- Learns from and reinforces historical and social inequalities.
- Can disadvantage already marginalised groups.
- May appear neutral while producing unfair outcomes.

E ENVIRONMENTAL IMPACTS

AI has significant environmental impacts:

- Has high (and increasing) energy, water and carbon costs.
- Requires intensive consumption of natural resources.
- Shifts environmental costs to others and the future.

H HUMAN AGENCY & RIGHTS

AI can impact human agency & has human costs:

- Can replace rather than support thinking and learning.
- Affects autonomy, judgement, voice and creativity.
- Has hidden labour and wellbeing impacts.

U USE OF DATA & PRIVACY

AI has implications for data privacy and safety.

- Collects and infers personal information.
- Data use is often opaque or poorly understood.
- Raises questions of consent and control of personal data.

M MISINFORMATION, TRUTH & TRUST

AI makes mistakes and can be misused:

- Misinformation (accidental or intentional) impacts truth and trust.
- Blurs authorship and academic integrity.
- Deepfakes, scams and fake news become harder to detect.

A ACCOUNTABILITY & ATTRIBUTION

AI can reinforce or redistribute power:

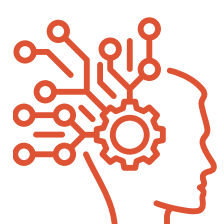
- It is often unclear who is accountable for harm.
- Decisions may be hidden in systems and vendors.
- Attribution of work and ownership of ideas becomes complex.

N NEXT GENERATIONS

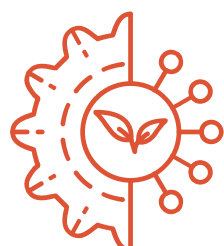
AI is shaping the futures of the next generation:

- What are we normalising with surveillance & convenience?
- How do we want to shape the future of work, life & society?
- How do we prevent long-term societal and environmental harms?

The presence of AI requires **rethinking** how we interact with knowledge and technology to ensure **safe, ethical and sustainable** futures.



Critical Thinking
& Reflexivity



Sustainable &
Ethical Practices



Inclusive &
Humane Choices

